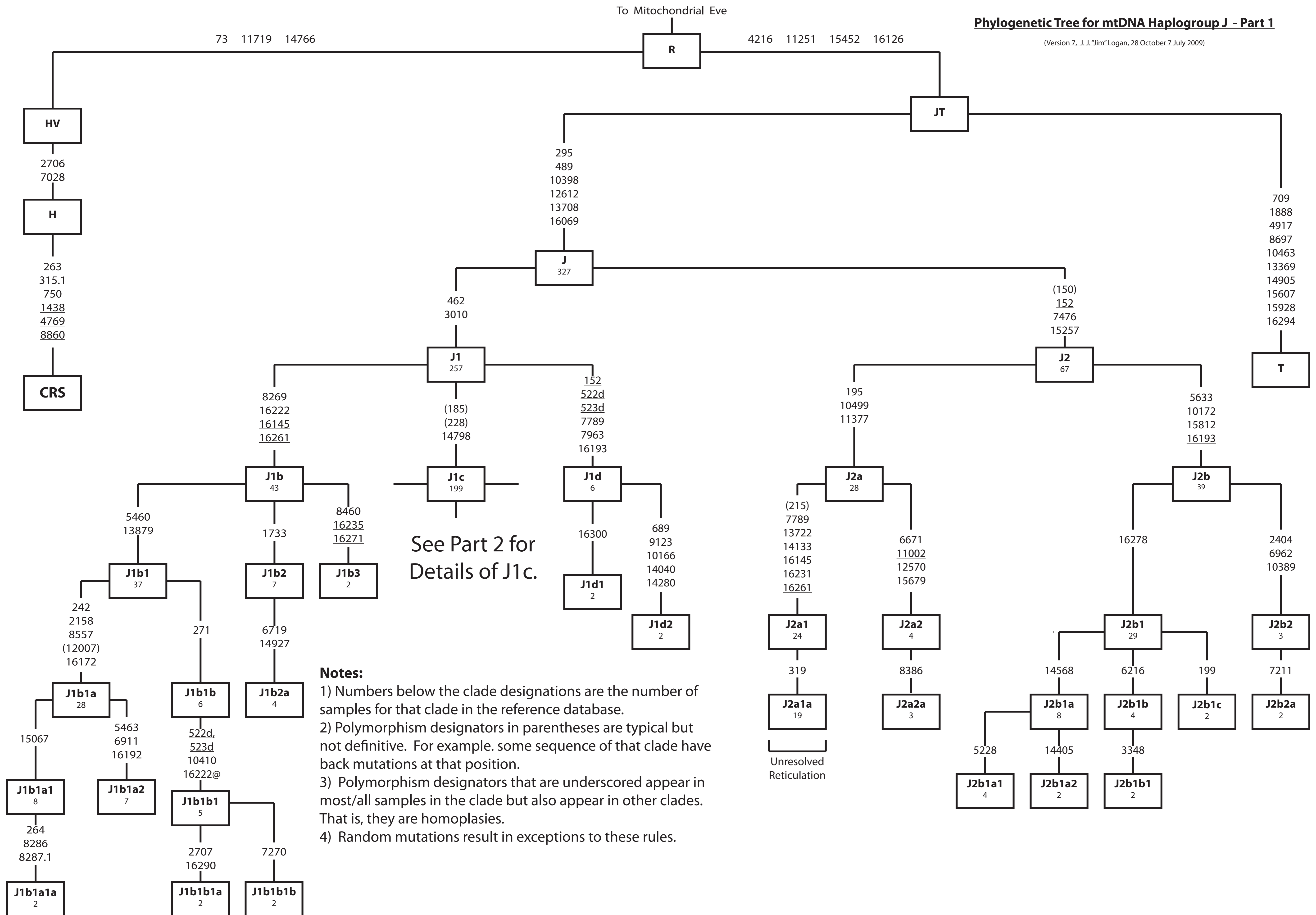


# Phylogenetic Tree for mtDNA Haplogroup J - Part 1

(Version 7, J.J. "Jim" Logan, 28 October 7 July 2009)



- Notes:**
- 1) Numbers below the clade designations are the number of samples for that clade in the reference database.
  - 2) Polymorphism designators in parentheses are typical but not definitive. For example, some sequence of that clade have back mutations at that position.
  - 3) Polymorphism designators that are underscored appear in most/all samples in the clade but also appear in other clades. That is, they are homoplasies.
  - 4) Random mutations result in exceptions to these rules.