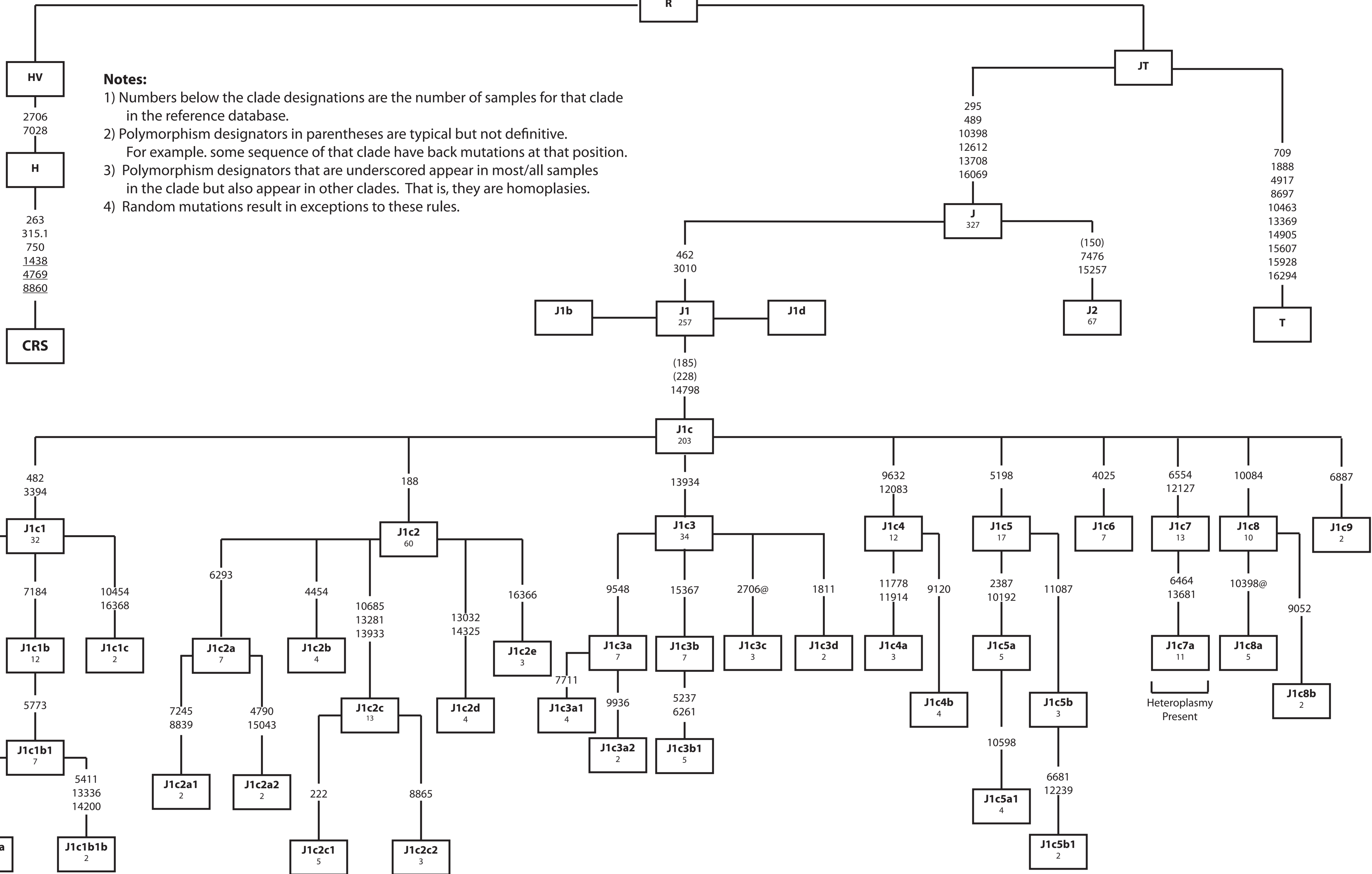


To Mitochondrial Eve

73 11719 14766

4216 11251 15452 16126



**Notes:**

- 1) Numbers below the clade designations are the number of samples for that clade in the reference database.
- 2) Polymorphism designators in parentheses are typical but not definitive. For example, some sequence of that clade have back mutations at that position.
- 3) Polymorphism designators that are underscored appear in most/all samples in the clade but also appear in other clades. That is, they are homoplasies.
- 4) Random mutations result in exceptions to these rules.